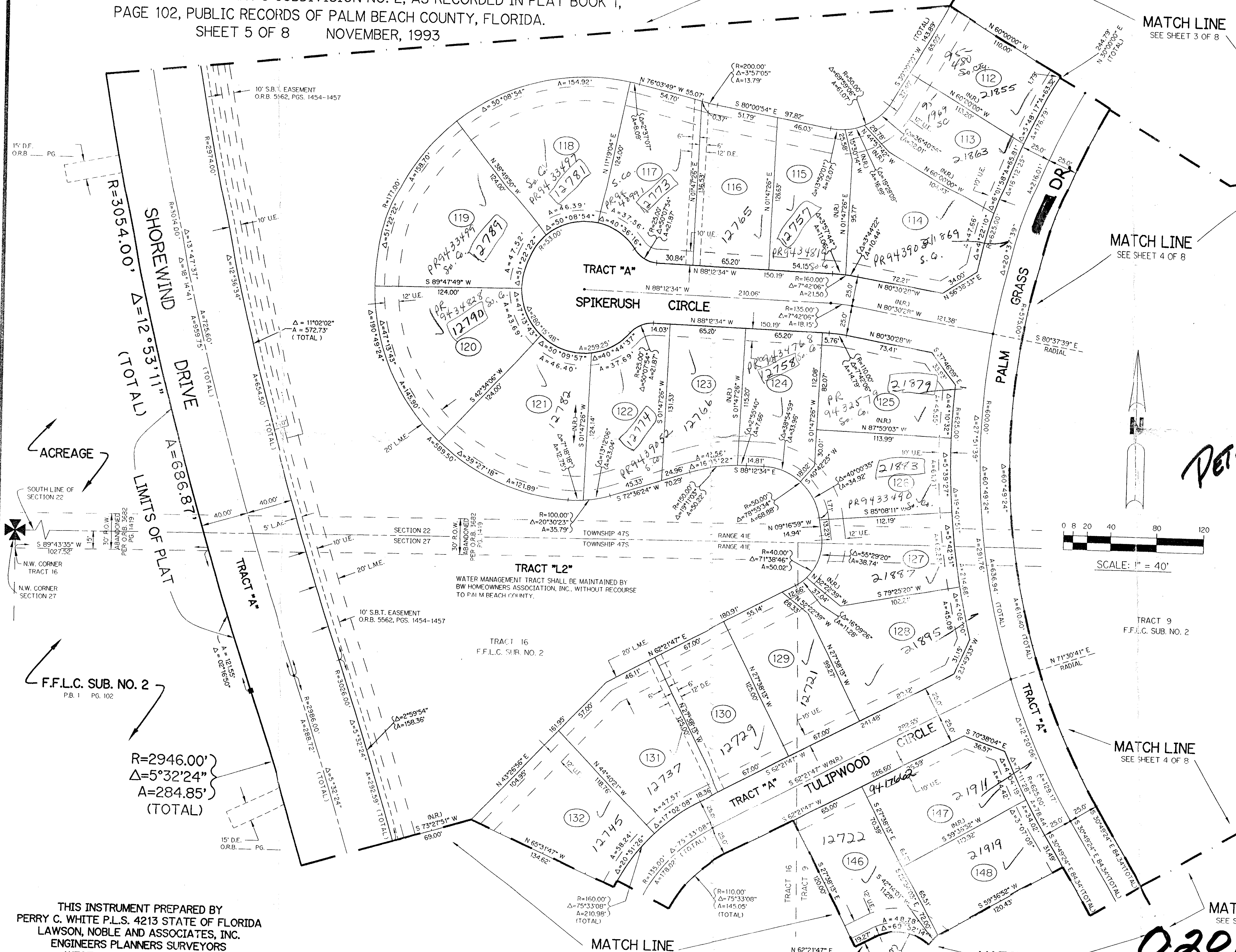
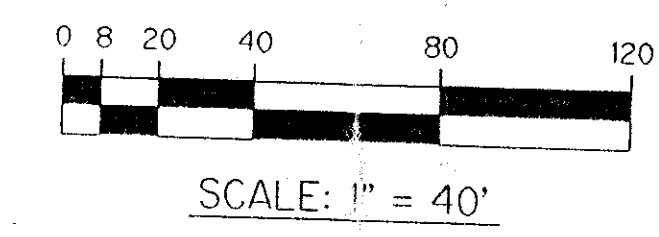


# BOCA WINDS - PARCEL E

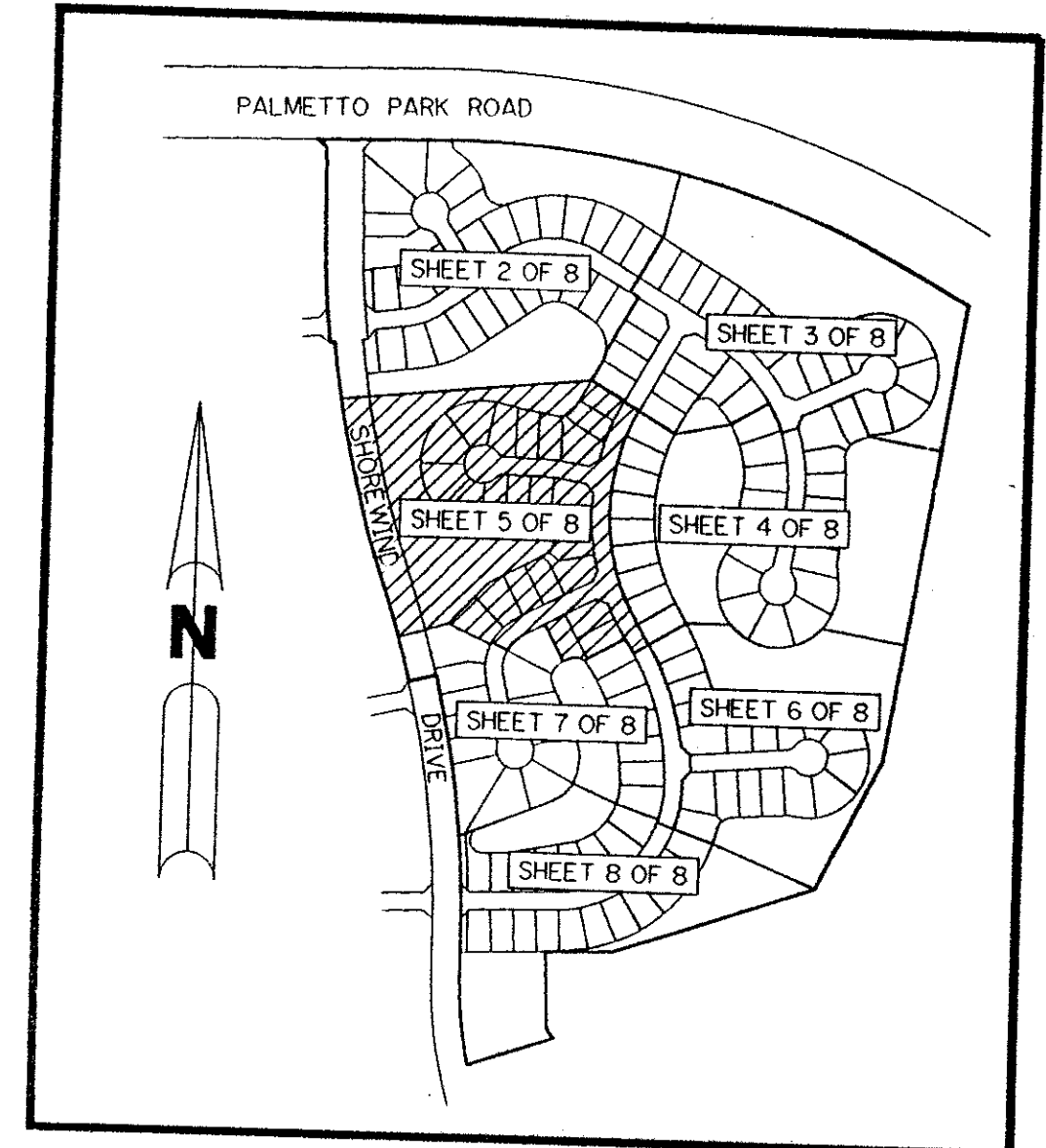
A PARCEL OF LAND LYING IN SECTION 22 AND 27, TOWNSHIP 47 SOUTH, RANGE 41 EAST, SAID PARCEL ALSO BEING A REPLAT OF A PORTION OF TRACTS 9, 10, 11, 14, 15 AND 16, FLORIDA FRUITLANDS COMPANY'S SUBDIVISION NO. 2, AS RECORDED IN PLAT BOOK 1, PAGE 102, PUBLIC RECORDS OF PALM BEACH COUNTY, FLORIDA.  
SHEET 5 OF 8 NOVEMBER, 1993



- LEGEND:**
- - PERMANENT REFERENCE MONUMENT, PLS #4213
  - - PERMANENT CONTROL POINT, PLS #4213
  - Δ - DELTA ANGLE
  - A - ARC LENGTH
  - R - RADIUS
  - D.E. - DRAINAGE EASEMENT
  - F.P.E. - FLOOD PLAIN EASEMENT
  - L.A.E. - LIMITED ACCESS EASEMENT
  - L.M.E. - LAKE MAINTENANCE EASEMENT
  - N.R. - NOT RADIAL
  - OR. - OFFICIAL RECORD
  - OR.B. - OFFICIAL RECORD BOOK
  - O.S. - OPEN SPACE
  - P.B. - PLAT BOOK
  - P.S. - PAGES
  - P.L.S. - PROFESSIONAL LAND SURVEYOR
  - S.T. - SURVEY TIE LINE
  - U.E. - UTILITY EASEMENT
  - L.M.A.E. - LAKE MAINTENANCE ACCESS EASEMENT
  - L.E. - LANDSCAPE EASEMENT
  - F.F.L.C. - FLORIDA FRUITLANDS COMPANY'S
  - SUB. NO. 2 - SUBDIVISION NO. 2
  - S.B.T. - SOUTHERN BELL TELEPHONE



*DET. 80-47*  
*ROADS #113902*  
*PER UNIT*



PARCEL E  
SUBDIVISION \* BOCA WINDS  
BOOK 72 PAGE 72  
FLOOD ZONE A-1 FLOOD MAP 400B  
QUAD \* 09 ZONING RT  
SE 80-47 ZIP CODE 33478  
SUB NAME BAY WINDS 31433

TAZ 778

THIS INSTRUMENT PREPARED BY  
PERRY C. WHITE P.L.S. 4213 STATE OF FLORIDA  
LAWSON, NOBLE AND ASSOCIATES, INC.  
ENGINEERS PLANNERS SURVEYORS  
WEST PALM BEACH, FLORIDA

*0201-00572/72*

*BOCA WINDS - PARCEL E*